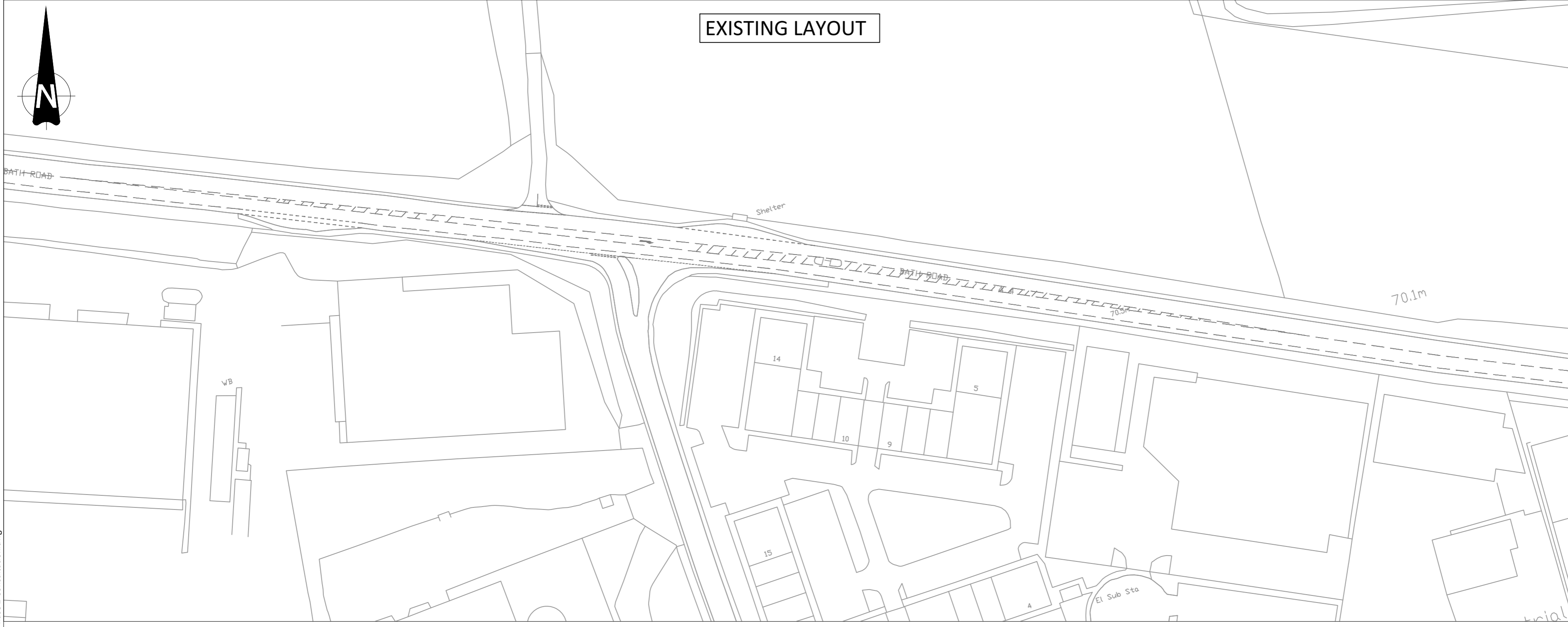
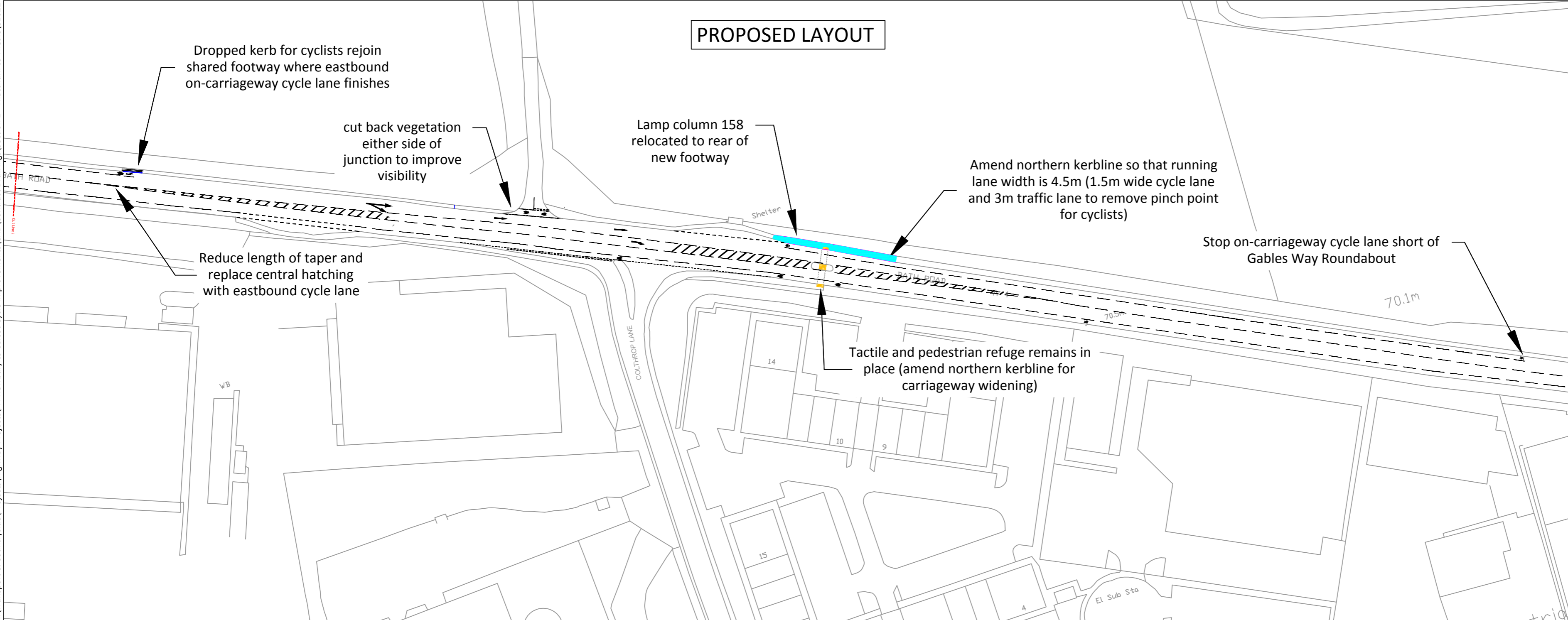


EXISTING LAYOUT



PROPOSED LAYOUT



KEY

- Dropped kerb
- New kerbline
- Footway widening

NOTES

- 1) All dimensions are shown in metres unless shown otherwise.
- 2) This drawing shows a proposed option and is subject to change following the location, depth and height of existing utility services.
- 3) WBC Standard Details must be adhered to at all times unless specified by the Overseeing Organisation.
- 4) Prior to any excavations the contractor will establish the location of existing utility services.

B			
A			
REV	DESCRIPTION	DR	AU
Status			



Transport & Countryside | Council Offices
Market Street | Newbury | RG14 5LD

Project Title				
NCN422 Phase 2 Bath Road				
Drawing Title				
RSA1: Colthrop Industrial Estate to Gables Way Roundabout (Pg 13 of 13)				
Date	Drawn By	Checked By	Paper Size	Drawing Scale
01/04/18	JBK	NS	A2	1:1000
Drawing Number				Revision
81621-Consultation				

I:\Transport & Countryside\Projects\Highway Projects\A4 Newbury to Calcot Cycle Improvements\CAD\Contract Drawings\Section 2 - Thatcham to Theale\81621 - Phase 2 Consultation.dwg